

Limitation of Liability

It is understood and agreed that seller's liability whether in contract, in tort, under warranty, in negligence or otherwise shall not exceed the return of the amount of the purchase paid by the purchaser and under no circumstances shall seller be liable for special, indirect or consequential

damages. The price stated for the equipment is consideration in limiting seller's ability. No action, regardless of form, arising out of the transactions may be brought by purchaser more than one year after the cause of action has occurred.

Warranty

1. Antunes Controls products are guaranteed to be free from mechanical and electrical defects for a period of one year from date of shipment under normal use and service provided installation is made in accordance with manufacturer's recommendations.
2. Parts deemed defective shall be repaired or replaced at manufacturer option and at manufacturer's expense but shall not include foreign or federal excise taxes, state or municipal sale or use taxes, all such taxes not limited to the foregoing being responsibility of the purchaser.
3. No charge for travel and/or mileage will be allowed to the purchaser.
4. Antunes Controls reserves the right to make changes in design or make any improvements on any products. The right is always reserved to modify our equipment because of new technology, underwriter's requirements and/or government regulations.
5. The following are not covered under warranty:
 - a. Failure from neglect, abuse, careless handling and mis-application of unit.
 - b. Failure to observe guidelines for installation or improper voltage hook-up.
 - c. Failure caused by improper maintenance. (See maintenance guidelines found in the operation instructions.)
 - d. Unless specifically allowed by Antunes Controls, no other charges may be included under warranty.



180 KEHOE BLVD. • CAROL STREAM, IL 60188 USA • 1-800-253-2991
www.antunescontrols.com



1/8 Din Digital Display

Model EDD

INSTALLATION INSTRUCTIONS

Specifications:

- ◆ **Accuracy:** 1% Full Scale \pm 1 LSD
- ◆ **Ambient Operating Temperature:** +30°F to 140°F (0°C to 60°C)
- ◆ **Ambient Storage Temperature:** -40°F to 180°F (-40°C to 82°C)
- ◆ **Package:** 1/8 Din Panel Mount Anodized Aluminum Case
- ◆ **Power:** 24 Vac
- ◆ **Display:** 3 1/2 Digit LED (.056" High)
- ◆ **Connections:** Screw Terminal
- ◆ **Inputs:** 4-20 Ma, 0-5 VDC or 0-10 VDC



This digital display is compact and easily installed. Please read these instructions carefully to assure correct installation. Prior to being put into operation, check all wiring and function of unit.

TEMPERATURE CONTROLLERS • TEMPERATURE DISPLAYS • AIR PRESSURE SWITCHES • GAS SWITCHES
• CUSTOM ELECTRONIC CONTROLS • SUBSYSTEMS ENGINEERING AND MANUFACTURING • TIMERS

Dimensional Drawings

Panel Cut-out

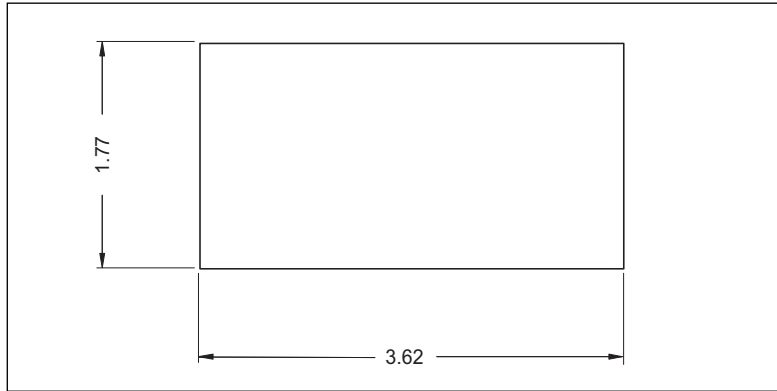


Figure 1

Figure 1 above, shows the panel cut-out required. Figure 2 below, shows the display dimensions. The unit is inserted into the panel cut-out from the front and secured in place with the panel locking bars and 6-32 screws supplied with the unit (see figure 3).

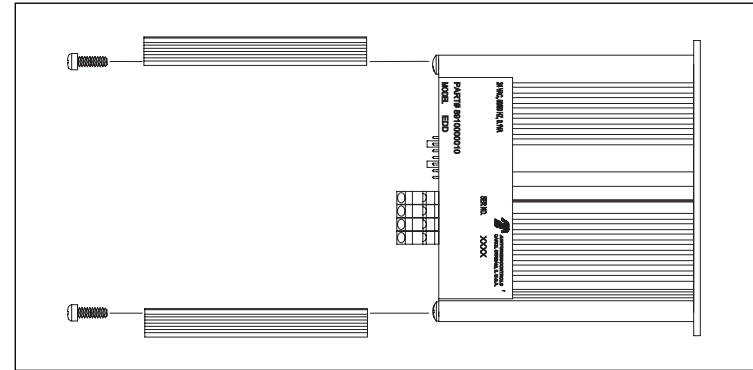


Figure 3

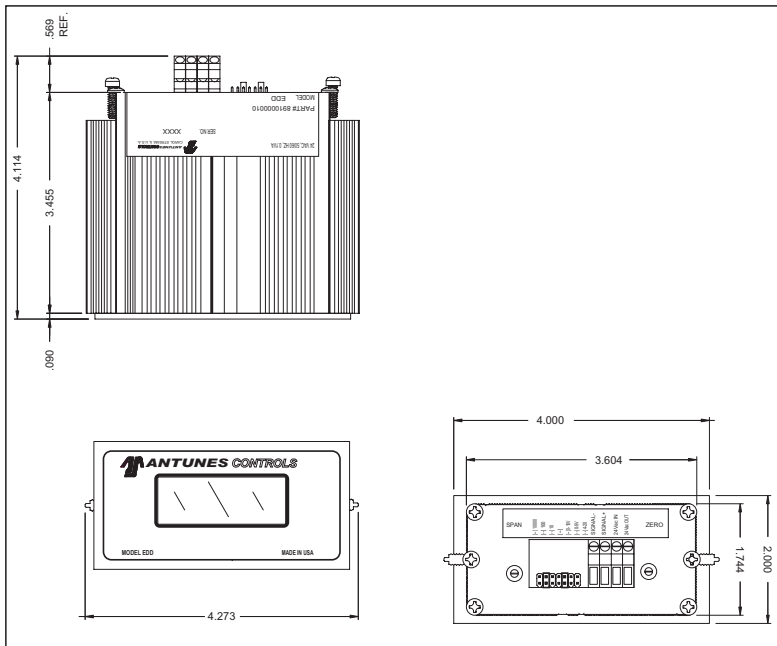


Figure 2

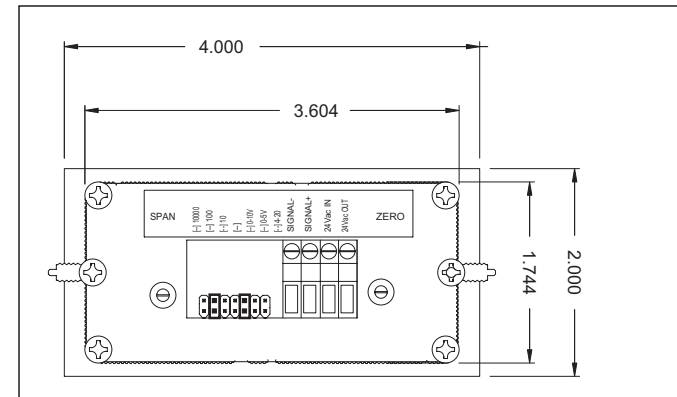


Figure 4

Model EDD: 1/8 DIN Digital Display

Control requires 24 VAC@0.2 amp power, which must be isolated from the 4-20 Ma loop voltage source. 4-20 Ma input is selected by inserting the jumper plug into the 4-20 location. Internal resistance is 0 Ohm. 5 or 10 volt inputs can be selected by moving the plug. Internal impedance will 100K Ohm. Decimal point location is selected by moving the other jumper plug to the desired location. The zero adjust can be used to offset the input signal (eg: at 4 Ma the display can read 000). Span adjust sets the desired full scale reading up to 1999.