

## TAP-400 Series Systems



**Antunes Filtration Technologies** has recently revolutionized the backroom water filtration package! The TAP system separates Mechanical Filtration (Surface/Depth-Filtration) from Chemical Treatment (Carbon Elements).

We utilize self-cleaning Ultra Filtration (.015 micron) ahead of open pore, low cost Carbon elements. This process is efficient, cost effective, and provides high quality treated water. We no longer use carbon for Mechanical filtration... only for the Chlorine Reduction process.

This system is equipped with an innovative SMART controller. This controller automatically back flushes the UFL cartridge and has the capacity to store up to 5 years of water data.

The TAP System successfully separates two important filtration processes and incorporates them into one easy to operate system that ensures your customers the highest quality water available.

### TAP Features

- Only Controlled-to-own water filtration solution available based on dollars per gallon
- Separated Mechanical (UFL-Ultra Filter) and Chemical (Carbon Elements)
- SMART Controller
- Self-cleaning UFL Ultra Filter with True Backwash
- Low Cost Efficient Carbon Elements/Consumables
  - Assured 120,000 Gallons (455,000 Liters) of Treated Water per Carbon Change
  - 10:1 chlorine reduction exceeds NSF Standard 42, which is a 2:1 reduction
- Critical reduction of Turbidity, Cyst, Bacteria, and Virus
- High Flow Rates - 10 & 5 GPM (38 & 19 LPM) Systems Available
- System can be configured to meet your needs

**TAP - The Total Solution!**

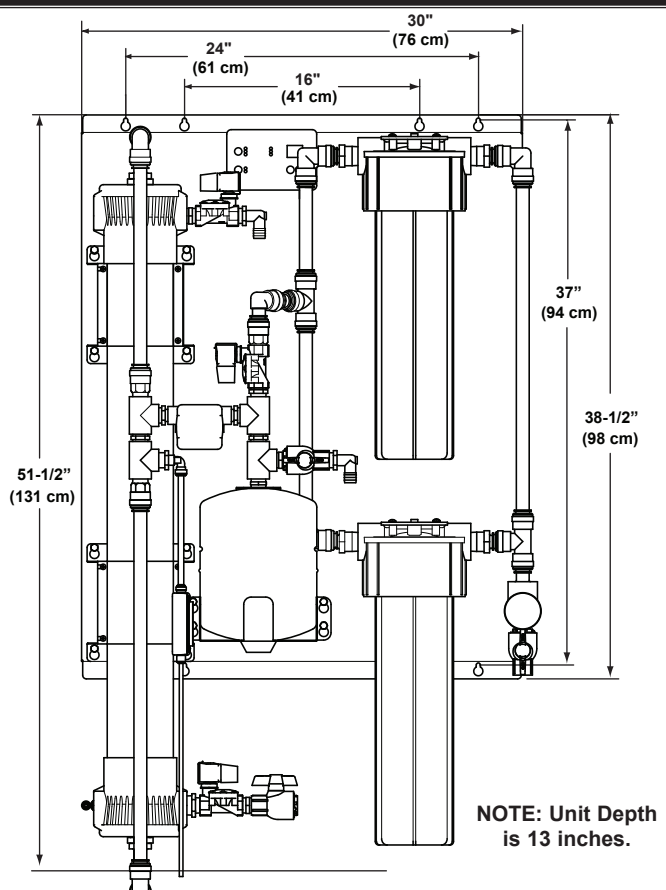


Replacement Element Tested and Certified by NSF International against NSF/ANSI Standard 42 and 53 for the reduction of:

Standard No. 42: Aesthetic Effects  
Nominal Particulate Reduction Class I

Standard no. 53: Health Effects  
Cyst Reduction Turbidity Reduction.

**TAP-442 Dimensions**



**For dimensions on our other TAP systems, Contact us today!**

**SMART Controller Features**

- Daily peak water usage / demand (times of day)
- Weekly peak water usage / demand (days of week)
- Totalizing water usage / demand (annual or preference)
- Peak pressure differential
- Flush frequency history
- Water waste percentage
- Total water vs. water-to-drain (waste) percentage
- Total UF remaining - with element re-order signaling
- Total Carbon remaining - with element re-order signaling
- Cartridge change history (UF / Carbon)
- Power outages history (18 hours of power back-up)

**Capacity**

Model Mfg. No.	Gal./ Liters Per Min.	Carbon Element Capacity (10:1 reduction)	UF Length	Number of Carbon Elements
TAP-420 9700800		0		0
TAP-421 9700810	5 gal. (19 liters)	60,000 gal. (227,000 liters)	20 in. (51 cm)	1
TAP-422 9700820		120,000 gal. (455,000 liters)		2
TAP-440 9700830		0		0
TAP-441 9700840	10 gal. (38 liters)	60,000 gal. (227,000 liters)	40 in. (102 cm)	1
TAP-442 9700850		120,000 gal. (455,000 liters)		2

**Electrical Ratings: TAP Series**

Voltage	Watts	Amperage	Hertz
120/230	40	0.33/.017	50/60

**NOTE: Country specific power supply must be specified at time of order.**

**Plumbing Connection: TAP Series**

Inlet	Outlet	Drain
3/4 inches NPT	3/4 inches NPT	3/4 inches NPT

**Specifications (Filter Cartridges)**

Maximum Operating Pressure	100 psig (690 kPa)
Maximum Operating Temperature	104° F (40° C)
Maximum Trans Membrane Pressure	45 psi (3.1 bar)
pH Range	3-10
MWCO	100 kD